

# MONTHLY MEMBERSHIP PROGRESS REPORT

District 321B1

Results as of: 5/31/2020

GMT:

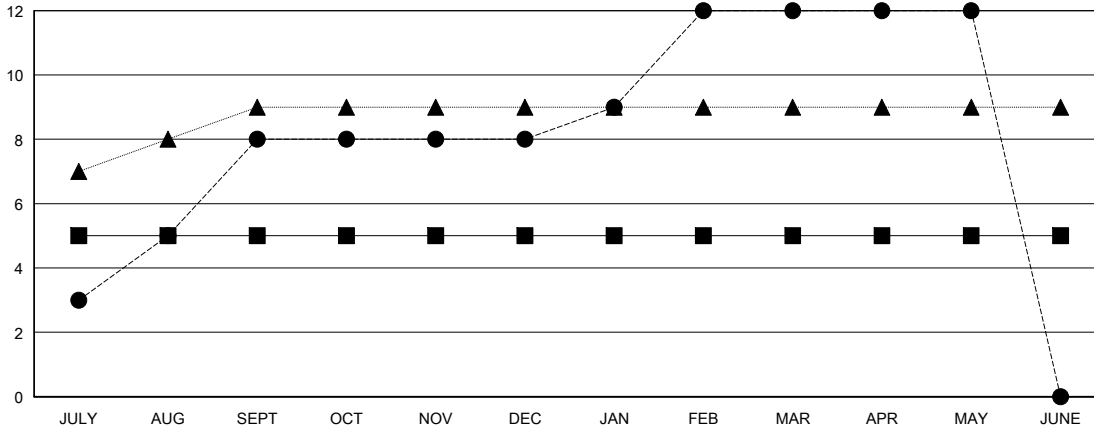
LOCATION INDIA

GMT CA

Clubs			
RESULTS FOR 2019-2020			
QUARTER	NEW CLUB GOAL	NEW CLUBS	DROPPED CLUBS
JULY/AUG/SEPT	5	8	1
OCT/NOV/DEC	0	0	2
JAN/FEB/MAR	0	4	1
APR/MAY/JUNE	0	0	0

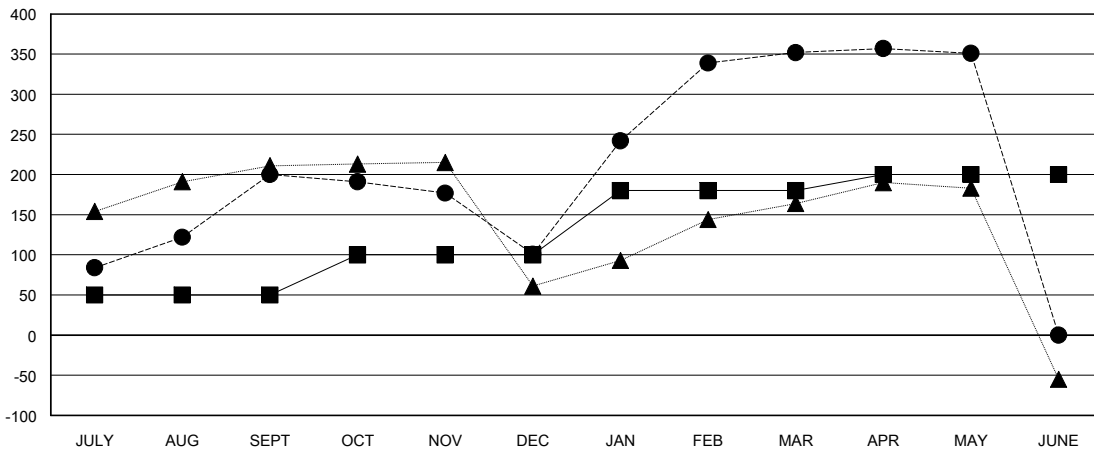
Members			
RESULTS FOR 2019-2020			
QUARTER	MEMBER GROWTH NET GOAL	MEMBER GROWTH ACTUAL	DROPPED MEMBERS ACTUAL (including transfers)
JULY/AUG/SEPT	50	326	56
OCT/NOV/DEC	50	33	121
JAN/FEB/MAR	80	341	73
APR/MAY/JUNE	20	14	14

GOALS AND ACTUAL NEW CLUBS CUMULATIVE



- - CURRENT YEAR GOALS FOR NEW CLUBS
- - CURRENT YEAR ACTUAL NEW CLUBS
- ▲ - LAST YEAR ACTUAL NEW CLUBS

GOALS AND ACTUAL MEMBERS CUMULATIVE



- - MEMBER GROWTH NET GOAL
- - MEMBER GROWTH ACTUAL
- ▲ - LAST YEAR MEMBERSHIP ACTUAL

DROPPED CLUBS: 4	
<b>DROPPED MEMBERS</b>	
DECEASED	15
CLUB CANCELLED	30
OTHER	219
<b>TOTAL</b>	<b>264</b>

63 CLUBS OF 103 ADDED 1 OR MORE NEW MEMBERS

GENDER DISTRIBUTION	
MALE	1,870 (56.51%)
FEMALE	1,439 (43.49%)

[CLICK HERE FOR CUMULATIVE MEMBERSHIP DATA](#)

TOTAL FAMILY UNIT MEMBERS	2,101
FAMILY MEMBERS PAYING HALF DUES	1,143